



**CEBEX**  
Scandinavian Ceramics

SE DK EN

# Top loaded kiln SC-20 - 200

## Overview and technical data



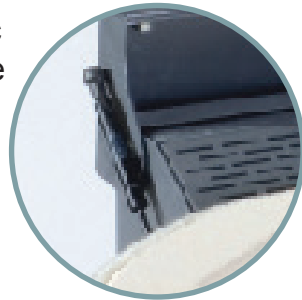
# Cerama SC TOP - Toploaded kilns

Cerama has been manufacturing kilns in Denmark since 1975 and with more than 35 years of experience in building kilns for both ceramics and glass, we have now developed a new top-loading kiln. Ceramas SC Kilns are the latest and most modern kiln model on the market.

New technology combined with high quality craftsmanship and know-how, makes these kilns unique with respect to firing economy, durability and finish. The usability is broad and covers most needs from glass, porcelain painting, earthenware, stoneware and porcelain.

The wide temperature range also contributes to the flexibility of the artistic work and is therefore an excellent choice for people working as glass or ceramic artists, teachers in schools and institutions or potters.

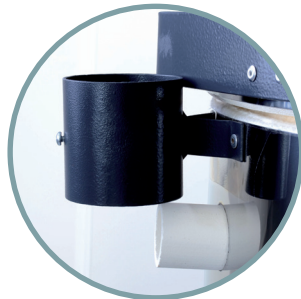
In addition to the kilns premier basic design, we also want to highlight the following properties:



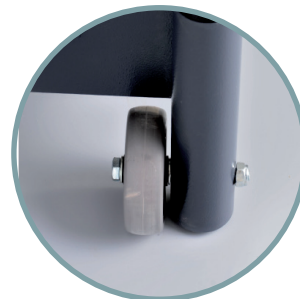
Solid adjustable suspension of the lid and easy to open with gas struts.



Forced safety switch connected to the lid.



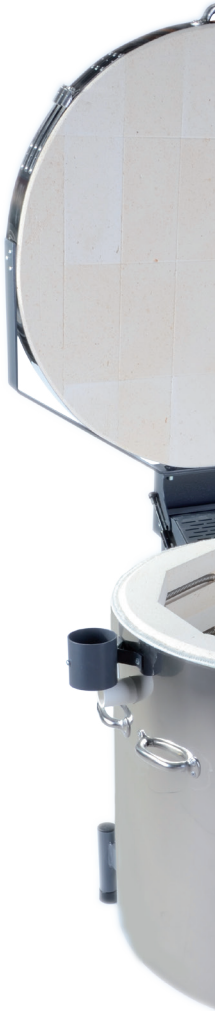
Air vent with ability to connect to ventilation system. Standard on all SC-kilns.

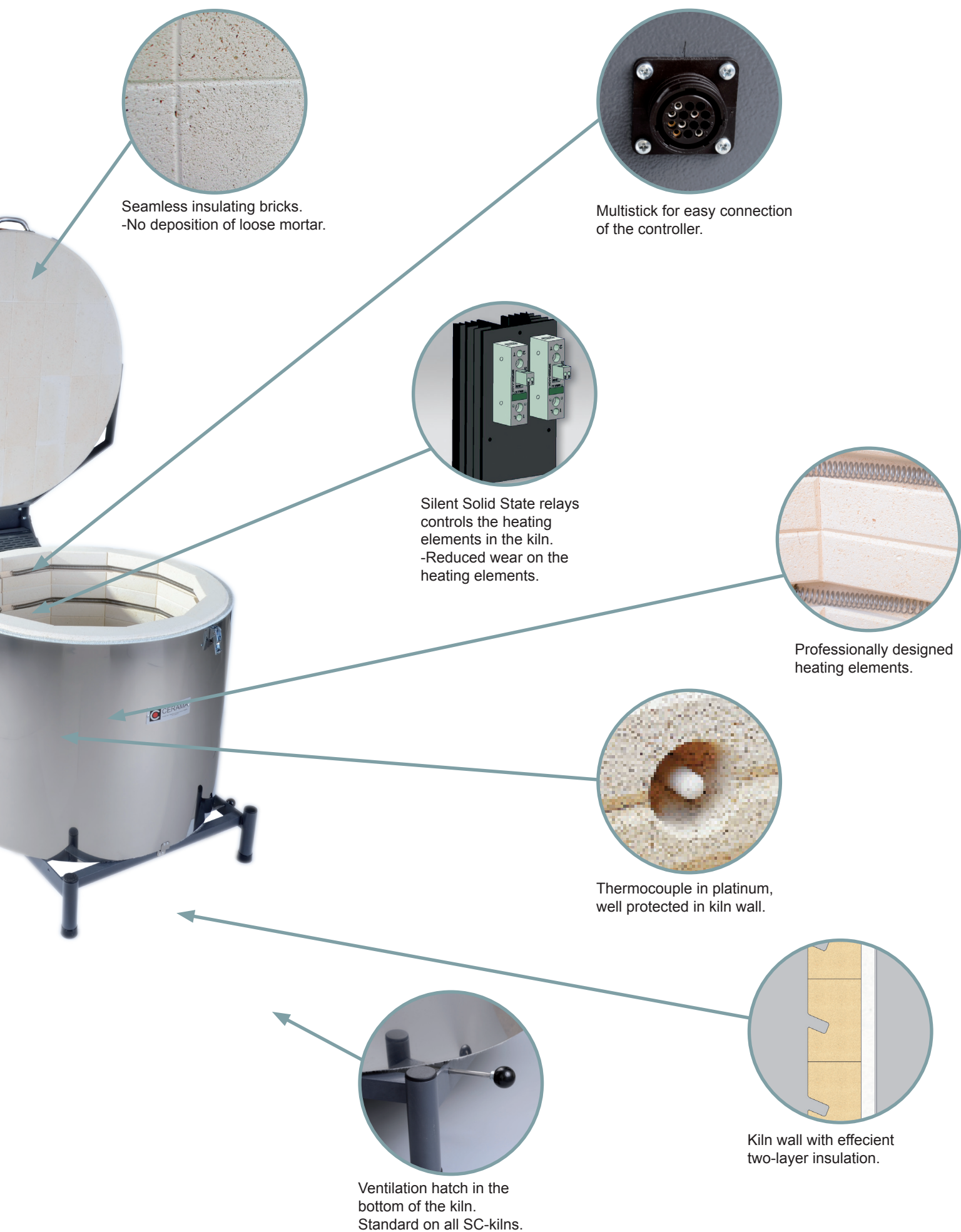


Wheels are standard on SC-65 and SC-100. As an option you can order a robust 4-wheel set for SC-150 and SC-200



**Note!** Our two, smallest models are delivered with 1-phase stick 230V.





Seamless insulating bricks.  
-No deposition of loose mortar.

Multistick for easy connection  
of the controller.

Silent Solid State relays  
controls the heating  
elements in the kiln.  
-Reduced wear on the  
heating elements.

Professionally designed  
heating elements.

Thermocouple in platinum,  
well protected in kiln wall.

Kiln wall with effecient  
two-layer insulation.

Ventilation hatch in the  
bottom of the kiln.  
Standard on all SC-kilns.



All Cerama top kilns in the SC-series are CE-marked and fulfill  
the latest requirements and standards for function and safety.



## Accessories included



Practical wall holder for the controller is included in the delivery.



The kilns are delivered with 3 pcs S-batts and 6-15 pcs of tubes in 2-5 heights depending on size of the kiln.



2 kg batt engobe, protecting the batts against glaze spill, is included in the delivery.



The kilns are delivered with CEE-contacts (SC-065 - SC-200) or 230V-stick (SC-020, SC-045) for easy connection.

## Controller G20-20 ALL IN and G20-06

Two intelligent controllers providing all the safety you need but are still easy to operate.

G20-20 can store 20 firing programs, 12 programs are pre-programmed according to handle the most common types of firing schedules for glass and ceramics i.e. biscuit firing, earthen- and stoneware glazes, glass fusing, slumping etc. All programs can be changed to fit your need.

G20-06 is built on the same intelligent model as G20-20 but with less programs and is delivered as a standard with our smallest kilns SC-020 and SC-045. The G20-06 has 6 programs, each with 16 segments and four of these has been used as program examples at the time of delivery.

G20-20 and G20-06 are specially developed for the Nordic market with regards to temperatures and firing processes i.e. RATE (°C/h) – TEMPERATURE – TIME (soak).

Read more about G20-20 and G20-06 on [www.cebex.se](http://www.cebex.se)

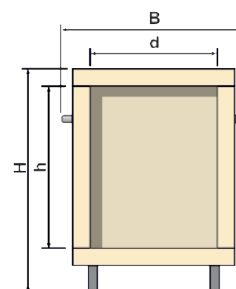
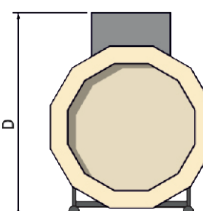
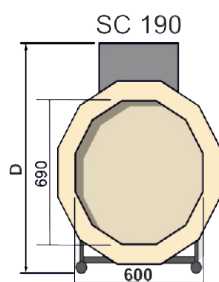


G20-20 ALL IN

G20-06



3 year product warranty. Except for wear parts (see Cebex Product warranty).



Type	Volyme, L	Weight, kg	Power, kW	Fuse	Int. dim (dxh)	Ext. dim (BxDxH)	Connection	S-batt	Controller	MWL* (kg)
SC 45	43	70	2,9	13 A	Ø400 x 340	610 x 775 x 725	230V/J	Ø350 x 10	G20-06	18
SC 65	62	100	5,0	10 A	Ø400 x 490	610 x 775 x 870	3x400/N/J	Ø350 x 10	G20-20	25
SC 100	99	115	7,0	13 A	Ø470 x 570	680 x 850 x 870	3x400/N/J	Ø420 x 16	G20-20	40
SC 150	151	140	10,0	16 A	Ø580 x 570	780 x 975 x 870	3x400/N/J	Ø520 x 18	G20-20	60
SC 190	188	150	10,5	16 A	600 x 690 x 570	780 x 1085 x 870	3x400/N/J	Special	G20-20	75
SC 200	201	160	12,0	20 A	Ø670 x 570	910 x 1035 x 870	3x400/N/J	Ø550 x 20	G20-20	80

We reserve us the right for changes without further notice. \*MWL = Maximum workload (total weight incl. refractories).